

# CERTIFICATE OF LOCATION OF GOVERNMENT CORNER

NORTHEAST Corner of Section 5, Township 107N, Range 39W

5th Principal Meridian, State of Minnesota, County of MURRAY

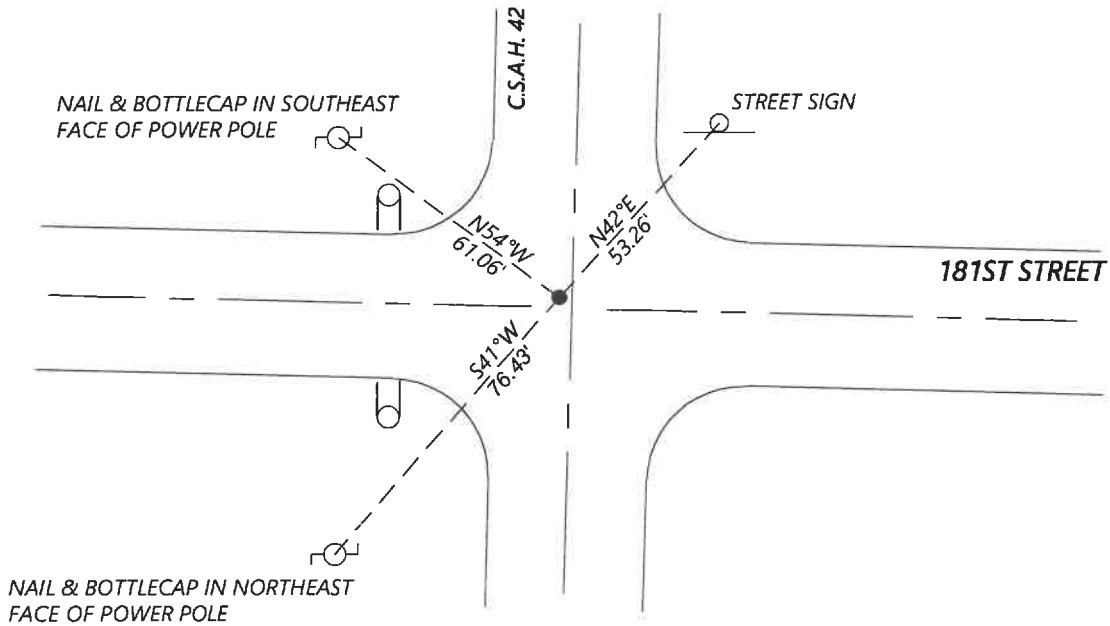
At the corner location shown on the sketch:

On 8/27/2020 found a NO. 4 REBAR WITHOUT CAP FLUSH WITH ASPHALT  
DATE

left monument as found       lowered monument       removed monument (explain)

On \_\_\_\_\_ placed a \_\_\_\_\_  
DATE

### SKETCH OF REFERENCE TIES



Statement of evidence for this corner location is on back of this page.

I hereby certify that this document was researched and prepared by me or under my direct supervision and that I am a licensed Land Surveyor under the laws of the State of Minnesota.

Signature [Handwritten Signature]  
Date 6/16/2021 License No. 45874

Title:

- Land Surveyor       Professional Engineer
- County Surveyor       County Engineer

OFFICE OF THE COUNTY RECORDER

County of Murray

I hereby certify that this document was filed in the Co.

Recorder's office at \_\_\_\_\_ .M. on the \_\_\_\_\_ day of \_\_\_\_\_ A.D. 20 \_\_\_\_\_

County Recorder Karen Brown

by JUN 22 2021, Deputy

DOCUMENT NO. \_\_\_\_\_

**Statement of Evidence:**

Northeast Corner of Section 5, Township 107 North, Range 39 West, 5th Principal Meridian, Murray County, Minnesota.

*No GLO Notes.*

*N/A Survey record for Section 4 shows a concrete stone at the corner.*

*Tack in highline pole NW 52.3ft*

*Tack in cor. fence post NE 45.3ft*

*1978 April, Survey record for Section 5 shows that a concrete monument was located at the corner.*

*Nail & cap in pp NW 62.10ft*

*1999 CSAH 42 plans show the corner at PI station 6+431.137*

*2000 March, Highway Department records show that a  $\frac{3}{8}$ " rebar placed at the corner.*

*Nail & cap in pp SW 76.48ft*

*Nail & cap in pp NW 61.58ft*

*Nails W 155.0ft, 250.0ft, 340ft*

*2017 May, Highway Department data records from a No. 4 rebar was located at the corner. They listed the coordinates: N: 195131.54 E: 557865.34*

*2020 September, Westwood Professional Services searched and found a No. 4 rebar and 1 tie from 2000 Highway Department data which fits well. The coordinates also fit well with 2017 Highway Department data. Accepted found monument and set additional reference ties.*

Analysis of the recovered data, field evidence and survey measurements, indicates that the monument found is the correct perpetuation of this corner. For additional information concerning this corner please contact Westwood Professional Services.